



**SURVEY MARKERS**  
**SOGEMARK**  
**SOGESTONE**



REF : T200

### SQUARE SOGEMARK

Square bollard marker PE HD UV treated

Colour :



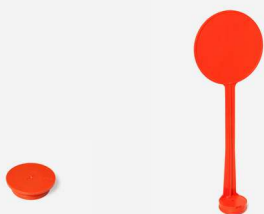
Net weight with no accessories : 0.200 kg

Dimensions :

- Base : 110x110 mm
- Top: 98x98 mm
- Height : 72 mm

This Marker will accept different accessories :

- The universal or customizable screw cap (Ref. B540)
- Hi-vis plaque with extended label surface (Ref. B580)



Recommended Anchor :

- Anchor Pick CS (harpoons)



This terminal head is also suitable for the following anchors:

- Anchor BB
- Anchor BBS
- Anchor CM



REF : T200

### OCTAGONAL SOGEMARK

Octagonal Marker PE HD UV treated.

Colour :



Weight with no accessories : 0.110 kg

Dimensions :

- Base : 107x107 mm
- Top : 90x90 mm
- Height : 50 mm

This Marker will accept different accessories :

- The universal or customizable screw cap (Ref. B540)
- Hi-vis plaque with extended label surface (Ref. B580)



Recommended Anchor :

- Anchor CS ( harpoons)



This terminal head is also suitable for the following anchors:

- Anchor BB
- Anchor BBS



REF : T200

### SQUARE SOGEMARK Ø 25

Square Marker HDPE UV treated in plain or marked for <<OS>>.

Colours :



Weight without accessories : 0.140 kg

Dimensions :

- Base : 94x94 mm
- Haut : 85x85 mm
- Hauteur : 50 mm

This Marker will accept different accessories :

- Reference point plug (personalizeable) (Ref. B570)
- Hi-vis plaque with extended label surface (Ref. B580)



This Marker is also suitable for the following anchors:

- Anchor OTP (in ribbed steel)
- Anchor BB
- Anchor BBS
- Anchor ribbed, tubular steel







REF : T200

### SQUARE SOGEMARK Ø 31

Square Marker HDPE UV treated in plain or marked for <<OS>>.

Colours :



Weight without accessories : 0.125 kg

Dimensions :

- Base : 94x94 mm
- Top : 85x85 mm
- Height: 50 mm

REF : T200

### ROUND SOGEMARK Ø 31

Square Marker HDPE UV treated in plain or marked for <<OS>>.

Colours :



Weight without accessories : 0.190 kg

Dimensions :

- Base : Ø 120 mm
- Top: Ø 85 mm
- Height: 60 mm

This Marker will accept different accessories :

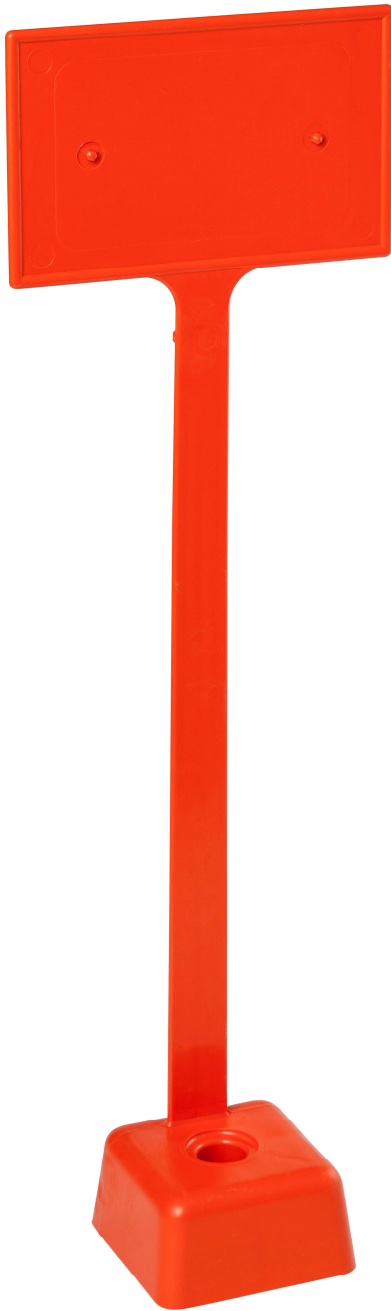
- Plaque type H320 (Ref. B510)
- Plaque type H530 (Ref. B510)
- Hi-vis plaque with extended label surface (Ref. B580)



This Marker is also suitable for the following anchors:

- Anchor BP2





REF : T 20022

## SQUARE SOGEMARK WITH HI-VIS INTEGRATED INDICATOR PLAQUE

Square Marker with integral extended plaque  
PE HD UV treated or marking "OS".

Colour :



Weight without accessories : 0.210 kg

Dimensions :

- Base of Marker : 94x94 mm
- Top of Marker : 85x85 mm
- Height of Marker : 50 mm
- Height of Plaque : 600 mm

This Marker will accept different accessories :

- Reference point plug (personalizeable)  
(Ref. B570)



This Marker is also suitable for  
the following anchors:

- Anchor OTP (in ribbed steal)
- Anchor BB
- Anchor BBS
- Anchor CM





REF : T300

**SQUARE SOGEROCK  
(POLYESTER/SAND)**

Square Marker in colour saturated Polyester/ sand . This Marker has a customizable clamping washer with non-return clips locking the Marker to the anchor.

Colours :



Weight without accessories : 1 kg

Dimensions :

- Base : 106x106 mm
- Top : 89x89 mm
- Height: 57 mm

This Marker will accept different accessories :

- Hi-vis plaque with extended label surface (Ref. B580)



This Marker is also suitable for the following anchors:

- Anchor OTP (in ribbed steel )
- Anchor BB
- Anchor BBS





REF : T300

### MINI SQUARE SOGEROCK (POLYESTER/SAND)

Flat and square Marker in colour saturated Polyester/sand . This Marker has a customizable clamping washer with non-return clips locking the Marker to the anchor.

Colours :



Weight without accessories : 0.475 kg

Dimensions :

- Base : 98x98 mm
- Top : 89x89 mm
- Height: 32 mm

This Marker will accept different accessories :

- Hi-vis plaque with extended label surface (Ref. B580)

This Marker is also suitable for the following anchors:

- Anchor OTP (in ribbed steel Ø 16)
- Anchor BB
- Anchor BBS

REF : T300

### OFFSET SOGEROCK (POLYESTER/SAND)

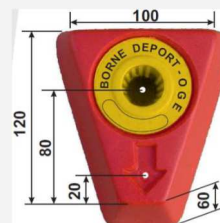
Tetrahedron Marker in colour saturated Polyester/sand . This Marker allows for an offset to avoid an obstacle and has a customizable clamping washer with non-return clips locking the Marker to the anchor.

Colours :



Weight without accessories : 1 kg

Dimensions :



This Marker will accept different accessories :

- Plaque type PAD P (ref. B51006)

This Marker is also suitable for the following anchors:


- Anchor OTP (in ribbed steel Ø 16)
- Anchor BB
- Anchor BBS



REF : T 300

**SQUARE SOGEROCK  
(POLYESTER/SAND)  
10/10 NON-RETURN FOR HEAVY DU-  
TY ANCHOR**

Square Marker in colour saturated Polyester/ sand . This Marker has a customizable clamping washer with non-return clips locking the Marker to the anchor,

Colours : 

Weight : 1.8 kg

Dimensions :

- Base : 100x100 mm
- Top : 100x100 mm
- Height: 100 mm

This Marker will accept different accessories :

- Hi-vis plaque with extended label surface (Ref. B580)

This Marker is also suitable for the following anchors:


- Anchor (in ribbed steel) Ø 20
- Anchor BTF Ø 26.9 mm



REF : T300

**SQUARE SOGEROCK  
(POLYESTER/SAND)  
13/13 NON-RETURN FOR HEAVY DU-  
TY ANCHOR**

Square Marker in colour saturated Polyester/ sand . This Marker has a customizable clamping washer with non-return clips locking the Marker to the anchor,

Colours : 

Weight : 4.5 kg

Dimensions :

- Base : 130x130 mm
- Top: 130x130 mm
- Height: 130 mm

This Marker will accept different accessories :

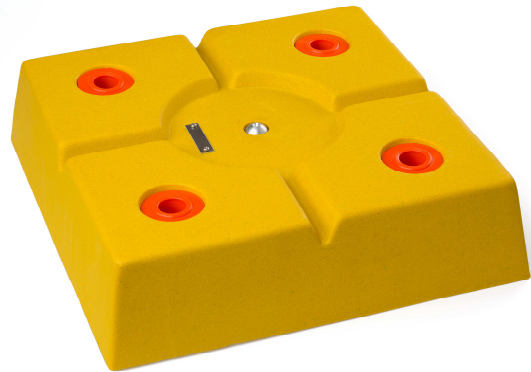
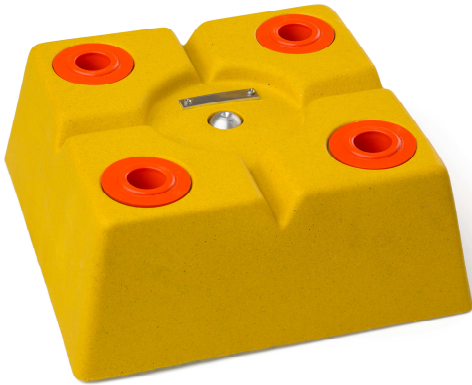
- Hi-vis plaque with extended label surface (Ref. B580)

This Marker is also suitable for the following anchors:

- Anchor (in ribbed steel) Ø 20
- Anchor BTF Ø 26.9 mm








REF : R53004

**SQUARE SOGEROCK  
(POLYESTER/SAND)  
100/100 A4 WITH REFERENCE POINT  
PLUG FOR USE WITH HEAVY DUTY  
ANCHORS**

Square Monobloc Marker with 4 anchor points, in colour saturated Polyester/sand .  
This Marker has a central Survey Reference Point. (SRP) and four customizable clamping washers with non-return clips locking the monobloc to the anchors,

Colours : 

Weight : 16.5 kg

Dimensions:

- Base : 300x300 mm
- Height: 200 mm

This Marker is also suitable for the following anchors:


- Anchor (in ribbed steel ) Ø 20
- Anchor BTF Ø 26.9 mm



REF : R53002

**SQUARE SOGEROCK  
(POLYESTER/SAND)  
460/460 A4 WITH REFERENCE POINT  
PLUG FOR USE WITH HEAVY DUTY  
ANCHORS**

Square Monobloc Marker with 4 anchor points, in colour saturated Polyester/sand .  
This Marker has a central Survey Reference Point. (SRP) and four customizable clamping washers with non-return clips locking the monobloc to the anchors,

Colours : 

Weight : 40.5 kg

Dimensions:

- Base : 460x460 mm
- Height: 200 mm

This Marker is also suitable for the following anchors:

- Anchor (in ribbed steel) Ø 20
- Anchor BTF Ø 26.9 mm



- Anchor OTP

