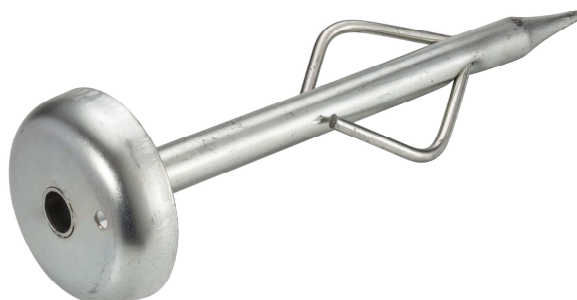




MARKERS

Monoblocs

Markers monoblocs



REF : B11001 à B11003

SOGEMARK BB META

A metal marker comprising:
a steel cup Ø ext. 120 mm
an anchor-type BB Ø 21.3 mm

Colour:



lengths:
BB META 40 CM
BB META 50 CM
BB META 60 CM

All parts welded together before Electro-galvanizing treatment.

REF : B12001 et B12002

SOGEMARK RM

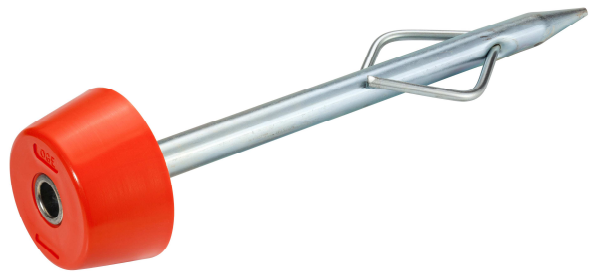
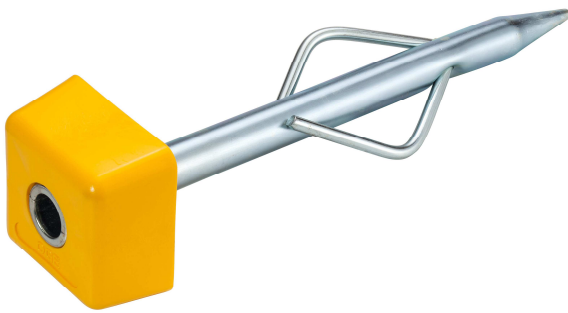
A metal marker comprising:
a steel cup Ø ext. 120 mm
an steel anchor Ø 26.9 mm with tines

Colour:



lengths:
RM 40 CM
RM 50 CM

All parts welded together before Electro-galvanizing treatment.



REF : B21502 à B21510

SOGEMARK SQUARE TYPE BPA

Complete marker assembly including:
a square head PE HD, UV treated Ø 31 mm
an anchor with elbow tines in
treated steel Ø26,9 mm

Colours:



lengths:
EPS 40 CM
EPS 50 CM

Electro-galvanizing treatment.

REF : B22202 à B22208

SOGEMARK ROUND TYPE BRA

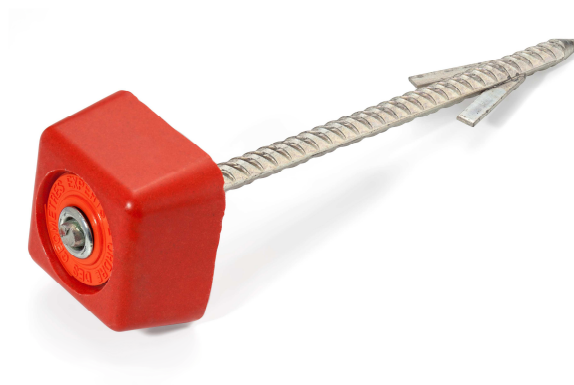
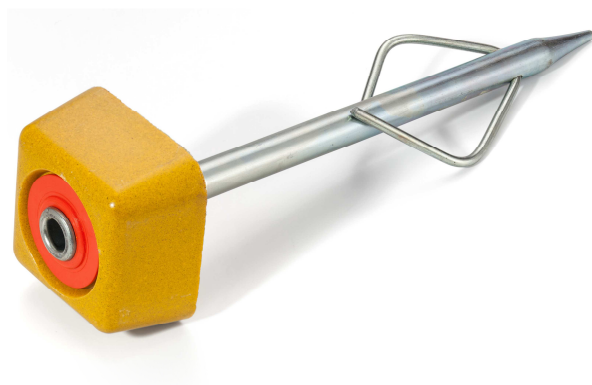
Complete marker assembly including:
a round head PE HD, UV treated Ø 31 mm
an anchor with 'elbow' tines in
treated steel Ø26,9 mm

Colour:



lengths:
BRA 40 CM
BRA 50 CM

Electro-galvanizing treatment.



REF : B44001 à B44013

SOGEROCK SQUARE TYPE BPA POLY

Complete marker assembly including:
a Polyester/sand marker Ø 22 mm
colour impregnated
customizable clamp washer
Steel anchor Ø 21.3 mm with 'elbow' tines

Colours:



lengths:

BPA POLY 40 CM
BPA POLY 50 CM

Traitement par électrozingage

REF : B47001 à B47018

SOGEROCK SQUARE TYPE MC

Complete marker assembly including:
a polyester/sand marker Ø 22 mm
colour impregnated
customizable clamp washer
Deformed steel anchor with
barbed tines Ø 16 mm

Colours:



lengths:
MC1 30 CM
MC2 40 CM
MC3 50 CM



REF : B31002 à B31006

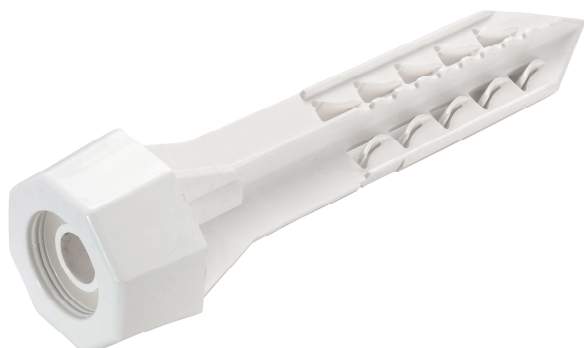
SOGEMARK TYPE CA

Monoblock Marker in HDPE, UV treated including:
Square marker head
Universal, screwed end cap which is customizable and removable
an anchor with barbs in HDPE

Colour:



lengths:
CA1 40CM
CA2 50 CM



REF : B32002 à B32010

SOGEMARK TYPE EXCEL

Monoblock marker in HDPE, UV treated including:
Octagonal marker head
Excel screwed end cap which is removable and customizable
Anchor with multiple vanes allowing downward force but provide resistance to extraction

Colour:



lengths:

E1 40 CM

E2 45 CM



REF : B33001 à B33005

SOGEMARK TYPE M

Monoblock marker in HDPE ,UV treated including:
Round marker head
Universal, screwed end cap which is customizable and removable
Finless anchor

Colour:



length:
M1 40 CM
M2 50 CM



REF : B34002 et B34005

SOGEMARK TYPE MA 40 CM

Monoblock marker in HDPE, UV treated including:
Round marker head
Universal, screwed end cap which is customizable and removable
an anchor with barbs in HDPE

Colour:



length:
MA1 40 CM
MA2 50 CM