



ANCHORS FOR SIGNAGE & MARKERS SOGEPICK– BULLHORN VERSION

SOGEPICK by TELLURA is a system which will reliably anchor signposts or cables with unmatched installation speed. Its simplicity of design makes the requirement for a concrete foundation an unnecessary, relic of the past.

Their sizes vary in diameter (26.9 to 33.7 mm) and length (400 mm to one meter).





INSTALLATION INSTRUCTIONS FOR SOGEPICK ANCHORS WITH THE TELLURA TINES

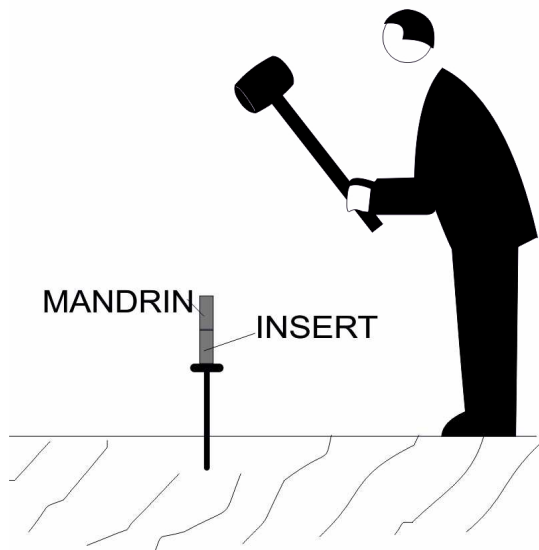
Installation tools: a Sledge Hammer, a driving Punch "A" or a locking bolt "B" or "C" insert. In the assembly drawing below, the use of an insert is shown.



Punch « A »



Insert « C »



STEP 1

After placing the Punch "A" in the tube of the SOGEPICK and positioning it correctly (once the tines are deployed the SOGEPICK cannot be removed). Drive the punch with the sledge. Ensure that the top plate of the SOGEPICK is driven 3 to 4 cm below the soil surface.

STEP 2

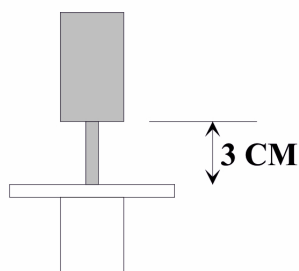
After removing the insert "C" drive the chuck with the mass to lift son:

- In hard ground: tines extend from 1 to 4 cm
- In mid-hard ground: extend a mid length around 12 cm on each side of the Sogepick
- In soft ground: Fully extend the 25 cm on each side of the Sogepick.

STEP 3

Remove the Punch.

In soft ground when removing the punch from 3 cm off the plate of the Sogepick.





REF : N 20004 & 20005
LIGHT ANCHOR WITH TOP PLATE
120 * 120 with 2 holes for M6 bolts

Hot-galvanized anchor composed of:

- Tube: Ø 26,9mm, 2 mm thickness
- Tines: Ø 6 mm,
- Top Plate: thickness 6 mm, 2 holes for M6 bolts

Colour : 

2 lengths available:

- 400 mm
- 500 mm.

REF : N 20015 à 20018
STANDARD ANCHOR WITH TOP PLATE
140 * 140 with 4 holes for M6 bolts

Hot-galvanized anchor consisting of:

- Tube: Ø 33.7 mm, thickness 2.6 mm
- Tines: Ø 8 mm,
- Top Plate: 6 mm thickness, 4 holes for M6 bolts
-

Colour : 

3 lengths available :

- 400 mm
- 500 mm
- 600 mm



REF : N 20007 & 20012

ANCHOR WITH RING TOP PLATE 140 * 140

Anchor in hot galvanized steel:

- Tube: Ø 26,9 or 33,7mm,
- Tines: Ø 6 mm or 8 mm
- Top Plate: 6 mm thick
- One or two stainless steel rings, Ø int. 6 mm



Colour :

3 lengths available:

- 400 mm
- 500 mm
- 600 mm

REF : N 20020 à 20023

STANDARD REINFORCED ANCHOR WITH TOP PLATE 140 * 140 AND 4 HOLES

Anchor in hot galvanized steel:

- Tube: Ø 33,7mm, thickness 2.6 mm
- Tines: Ø 8 mm.
- 4 reinforcement flanges at 4 mm thickness
- Top Plate: 6 mm thick, 4 holes for M6 bolts

Colour :



4 lengths available:

- 400 mm
- 500 mm
- 600 mm
- 800 mm



REF : S40003

ANCHOR J11 J12

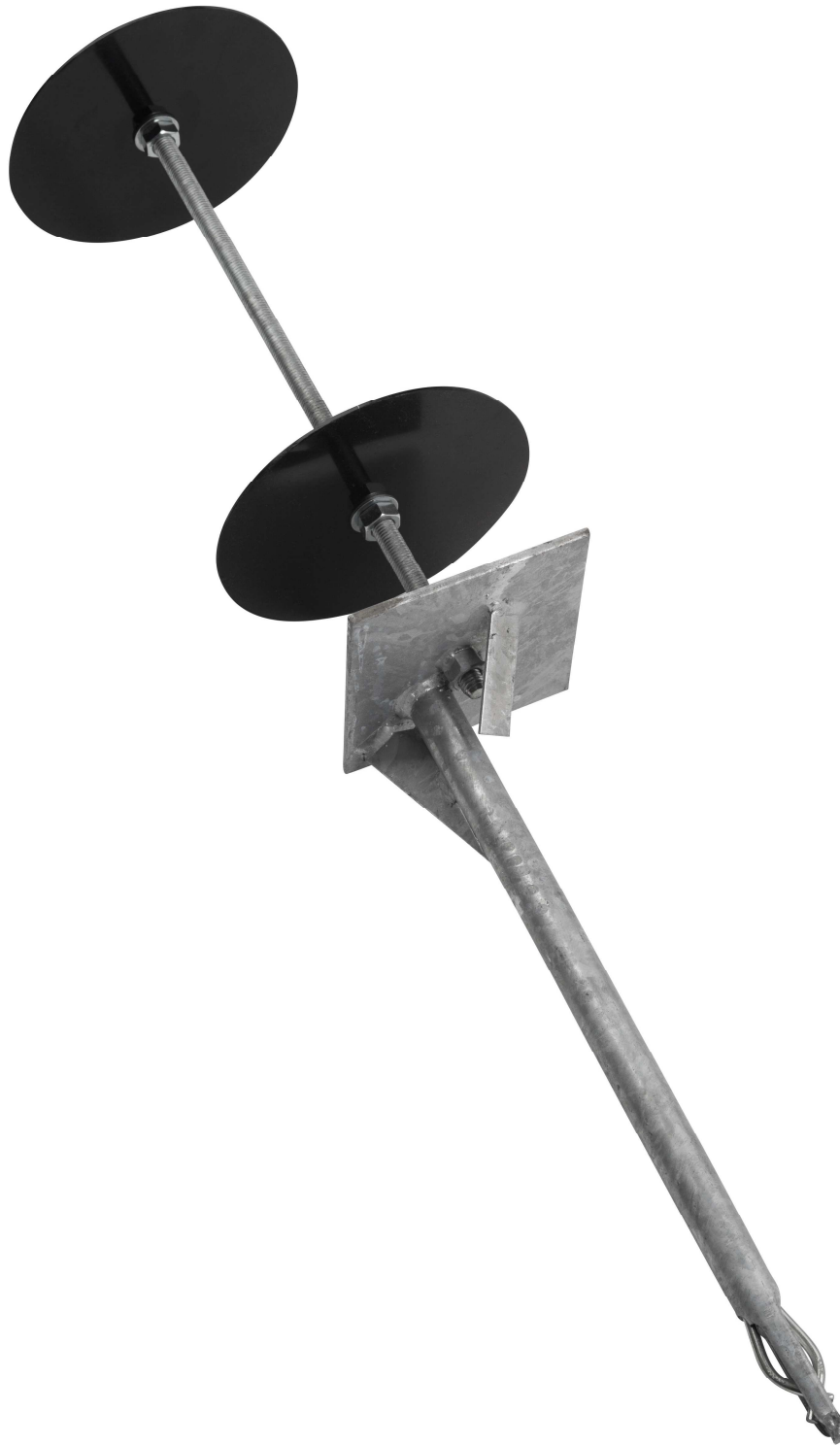
Offset anchor hot galvanized steel:

Tube: Ø 26.9 mm

Tines: Ø 6 mm

Top Plate: 150 * 150 mm, 6 mm thick

Fixing for marker: central hole for M12 threaded rod length 500 mm.



REF : S40002

SEALING ANCHOR J1 J3

Offset anchor hot galvanized steel:

Tube: Ø 26.9 mm

Tines: Ø 6 mm

Top Plate: 150 * 150 mm, 6 mm thick

Fixing for marker: central hole for M14 threaded rod, length 500 mm, 2 discs Ø 195 mm HDPE with locknuts



REF : S40008 à 40020

INDUSTRIAL SIGNAGE ANCHOR

Anchor set consisting of an anchor and a sleeve or housing which enables installation of all signs and street furniture.

Reinforced Anchor (in mm)

Ø 33.7 * 2.6 , 400 Long

Ø 33.7 * 2.6 , 500 Long

Ø 33.7 * 2.6 , 600 Long

Ø 33.7 * 2.6 , 800 Long

Housing (in mm)

50 * 50 * 3 for 40 * 40 Section

90 * 50 * 3 for 80 * 40 Section

90 * 90 * 3 for 80 * 80 Section

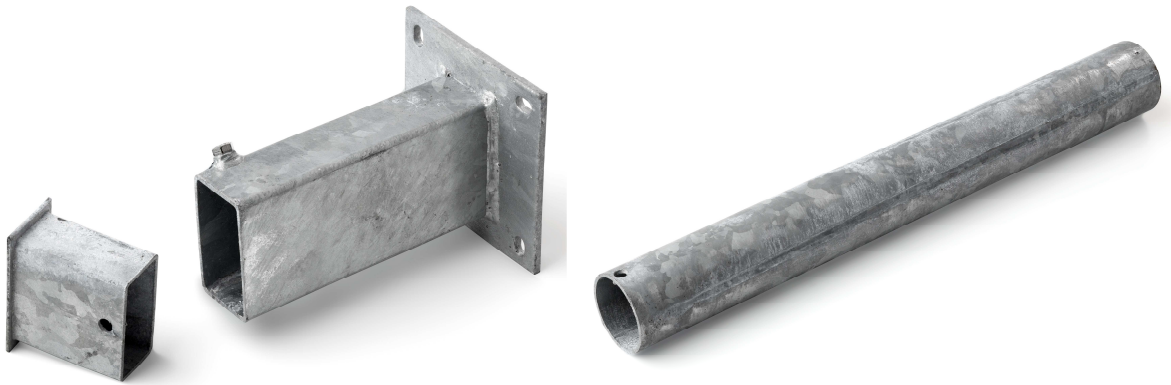
Ø 70 * 3,25 for Ø 60 Tube



SHEATHS, POLES & MASTS SIMPLE AND ULTRA-RESISTANT SOLUTION FOR SIGNAGE AND URBAN FIXTURES

SOGEPOLE with baseplate by TELLURA offers superior breakout resistance despite design simplicity and ease of assembly. All TELLURE anchors and attachments offer uncompromising quality.





REF : S 10001 à 10008

**BOTTOM PLATE HOUSING 140 * 140
HEIGHT 200 mm**

Hot galvanized housing, available in the following dimensions in mm:

Housing 50 * 50 * 3	40*40 Section
Housing 90 * 50 * 3	80*40 Section
Housing 90 * 90 * 3	80*80 Section
Sleeve Ø 60.3 * 3	Ø 50 Tube
Sleeve Ø 70.3 * 3	Ø 60 Tube

Colour : Option : Blanking Plug



REF : S 10009 à 10013

BLINDEND SLEEVE , HEIGHT 500 mm

Hot galvanized Sleeve, available in the following dimensions in mm:

Housing 50 * 50 * 3	40*40 Section
Housing 90 * 50 * 3	80*40 Section
Housing 90 * 90 * 3	80*80 Section
Sleeve Ø 60.3 * 3	Ø 50 Tube
Sleeve Ø 70.3 * 3	Ø 60 Tube

Colour : Option : Blanking Plug





LIGHT MASTS WITH PLATE OR RETRACTABLE BASE

SOGEMAST by Tellura as an assembly (sleeve + anchor), offers simple and quick installation for any signage design which is both strong and durable. In a round or square format, the assembly can be equipped with weight bars if required.

Simple and tough, the Tellura masts are the most economical solution for any signage.





REF : S 20019 à 20027

LIGHT MAST FOR MOUNTING LAMPS

In Hot galvanized mast plate 100 * 100 * 4

Ø 26.9 mm	Height: 0.5 m / 1m et 1.5 m
30 * 30 * 2 mm	Height: 0.5 m / 1m et 1.5 m

REF : S 20001 à 20010

MAST WITH BASEPLATE & 4 HOLES

Hot galvanized mast plate 140 * 140 * 6

Ø 60 * 2 mm	Height: 1 m / 1.5 m / 2 m
40*40*2 mm	Height: 0.5m / 1 m / 1.5m et 2 m
80*40*2 mm	Height: 1 m / 1.5 m / 2 m



REF : S 20011 à 20016

FOLD-DOWN MAST

Foldable support for panels

Tube hot galvanized steel:

Section: 40 * 40 * 2

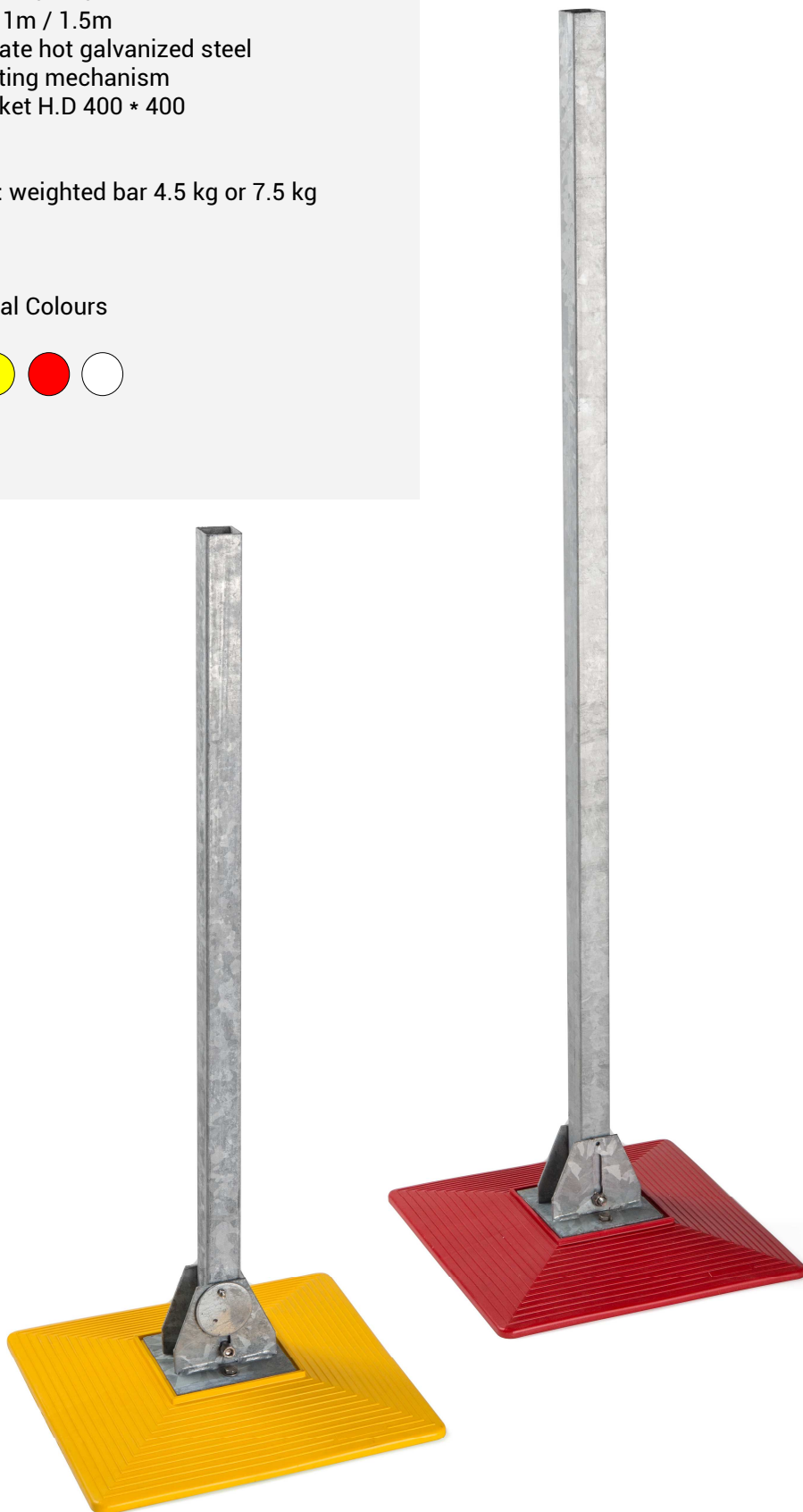
Height 1m / 1.5m

Baseplate hot galvanized steel
with tilting mechanism

PE socket H.D 400 * 400

Option: weighted bar 4.5 kg or 7.5 kg

Pedestal Colours





REF : S 20029 & 20030

FOLD-DOWN MAST - PAINTED

Foldable with equipment support holder:

Steel tube with epoxy paint:

Section: 40 * 40 * 2




Height 2m

Hot galvanized baseplate & steel tilting mechanism

PE socket H.D 400 * 400

Option: weighted bar 4.5 kg or 7.5 kg

Color Samples & Use:

-  Portable showers
-  Signalling gas con-
-  Fire Extinguishers

